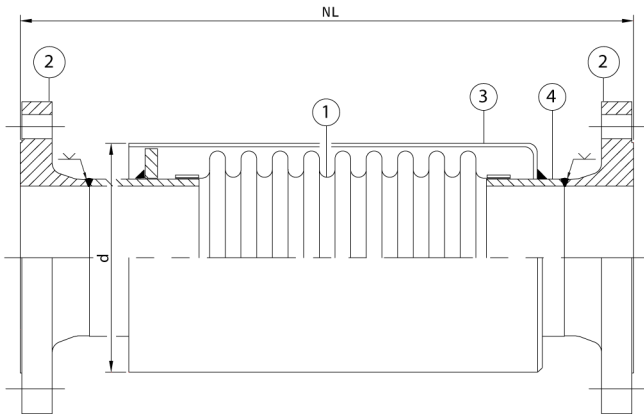
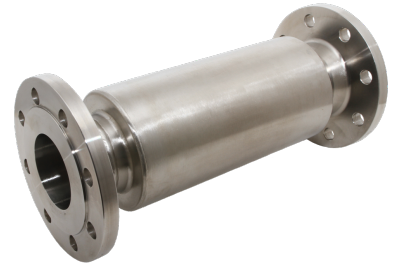


Stainless steel Expansion Joint, type RFA-R

Applications

A stainless steel expansion joint with stainless steel fixed flanges for the use in thermal oil pipe systems. For applications where a thermal expansion of the piping has to be absorbed. This type of expansion joint is basically meant for axial movements only.



Technical description

Bellow (1)	: AISI 316
Flanges (2)	: AISI 304/316, PN16
Outer cover (3)	: AISI 304L/AISI 316L
Welding ends (4)	: AISI 304L/316L

Diameter		NL		Axial	Max	Max.
DN	Type	neutral length	d	compression	pressure	pressure
mm (in)		mm	mm	mm	@20°C/bar	@200°C/bar
80(3")	RFA-R 80-16-45	425	140	-45	16	10
100(4")	RFA-R 100-16-45	425	154	-45	16	10
125(5")	RFA-R 125-16-50	460	206	-50	16	10
150(6")	RFA-R 150-16-60	460	219	-60	16	10
200(8")	RFA-R 200-16-55	480	273	-55	16	10

All information in this document is without any obligation, specifications subject to change without any notice.