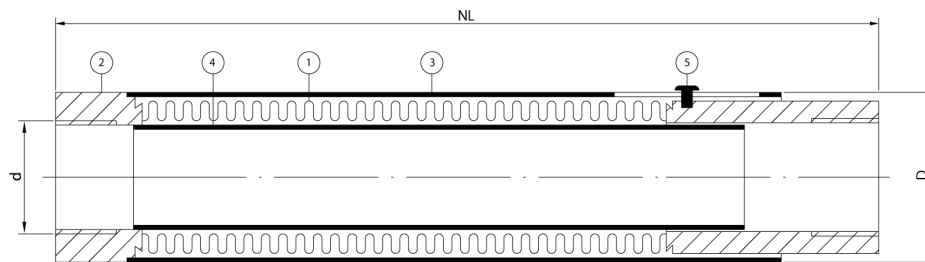


Stainless steel expansion joint, type ABFT

Applications

An expansion joint with female thread socks which guarantee fast and smooth tightening. For applications in mainly heating systems, where a thermal expansion of the piping has to be absorbed. Due to its aesthetic appearance, this expansion joint is widely used in living rooms, hotel chambers, offices etc. With the help of the limiting-pin, minimum and maximum limits and pretension are observed easily.



Technical description

Bellow (1)	: AISI 316Ti
Sockets (2)	: Carbon Steel
Outer sleeve (3)	: Carbon Steel
Inner sleeve (4)	: AISI 304
Pin (5)	: Carbon Steel

d Diameter	Type	NL neutral length	Axial compression	Axial extension	øD	d	Max. pressure @70°C/bar	Max. pressure @100°C/bar
mm (in)		mm	mm	mm	mm	mm		
15(½")	ABFT151650	260	-13	+12	35	½"	16	10
20(¾")	ABFT201650	260	-13	+12	42	¾"	16	10
25(1")	ABFT251650	260	-13	+12	51	1"	16	10
32(1¼")	ABFT321650	260	-13	+12	60	1¼"	16	10
40(1½")	ABFT401650	260	-13	+12	63	1 ½"	16	10
50(2")	ABFT501650	260	-13	+12	70	2"	16	10

All information in this document is without any obligation, specifications subject to change without any notice.