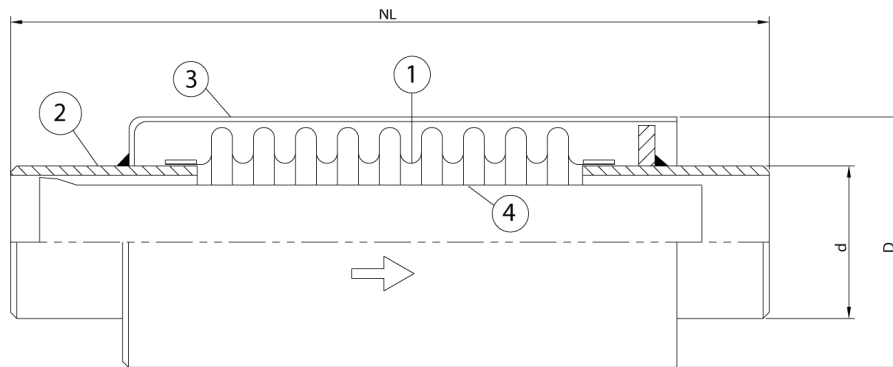


## Stainless steel expansion joint, type ABS

### Applications:

An expansion joint with steel welding ends for applications in mainly heating systems, where a thermal expansion of the piping has to be absorbed. The expansion joint will be delivered pre-stressed, which allows a maximum movement.



### Technical description

Bellow (1)	: AISI 316Ti
Welding ends (2)	: Carbon Steel
Outer sleeve (3)	: AISI 304
Inner sleeve (4)	: AISI 304

Diameter	Type	NL	Axial			Max.	Max.
DN		pre-stressed length	compression	D	d	pressure	pressure
mm (in)		mm	mm	mm	mm	@20°C/bar	@100°C/bar
15(½")	ABS 151630	210	-30	32	21,3	16	10
20(¾")	ABS 201630	200	-30	38	26,9	16	10
25(1")	ABS 251630	215	-30	45	33,7	16	10
32(1¼")	ABS 321630	225	-30	52	42,8	16	10
40(1½")	ABS 401630	220	-30	63	48,3	16	10
50(2")	ABS 501644	267	-44	76	60,3	16	10
65(2½")	ABS 651644	247	-44	102	76,1	16	10

All information in this document is without any obligation, specifications subject to change without any notice.