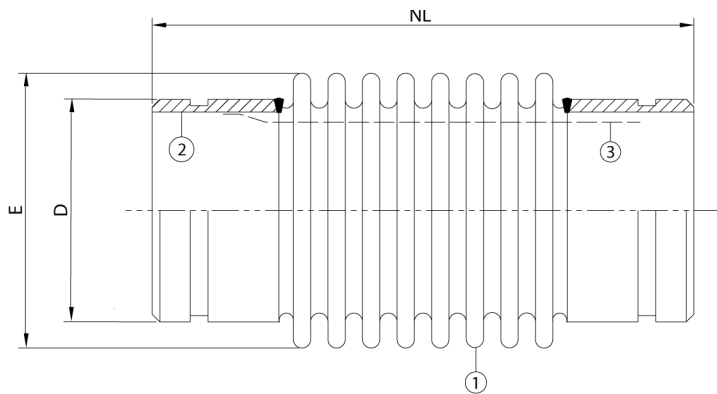


Stainless steel expansion joint, type ALG

Applications:

An expansion joint with steel grooved ends for use within grooved end pipe systems, e.g. Grinnell, Victaulic, etc. Using these couplings and fittings, combines a number of advantages. The ease and swiftness of installation reduces the actual time needed "on site". For applications in mainly heating systems, where a thermal expansion of the piping has to be absorbed. This type of expansion joint is basically meant for axial movements. The shown type is recommended for mounting with Grinnell Rigid couplings.



Technical description

Bellow (1) : AISI 316Ti
 Grooved ends (2) : Carbon Steel
 Inner sleeve (3) : AISI 304

Diameter	Type	NL	Axial			Max.	Max.
DN		neutral length	compression	D	E	pressure	pressure
mm (in)		mm	mm	mm	mm	@20°C/bar	@100°C/bar
25(1")	ALG 25-16-40	200	-20	+20	33,7x5,0	16	10
32(1¼")	ALG 32-16-40	205	-20	+20	42,4x4,5	16	10
40(1½")	ALG 40-16-50	234	-25	+25	48,3x5	16	10
50(2")	ALG 50-16-60	276	-30	+30	60,3x5	16	10
65(2½")	ALG 65-16-60	261	-30	+30	76,1x5	16	10

For combined movements, consult Amnitec BV.

All information in this document is without any obligation, specifications subject to change without any notice.