

Stainless steel expansion joint, type AN (custom made)

Applications:

Angular expansion joints from Amnitec are available in a variety of design, type AN1 (with hinges) and AN2 (with gimbal).

Type AN1 is designed with flat iron fittings which are fitted through the flanges and welded on the outside.

A cylindrical bolt, which allows angular movement in one plane, is mounted on the fitting above the centre line of the bellows. The expansion joint is made with one bellows.

Type AN2 is fitted with flat iron fittings. The fittings are secured to a middle ring with cylindrical bolts, which allow angular movement in all plane, above the centre line of the bellows. The expansion joint is made with a single bellow. Common to both types is the fact that the fittings have the task of absorbing the loads arising from the operating pressure. The fittings make axial expansions impossible, which means that the expansion joint can only absorb bending forces.

Angular expansion joints are suitable for installations where it is not possible to create sturdy fixing points, and in pipe systems where bending occurs.

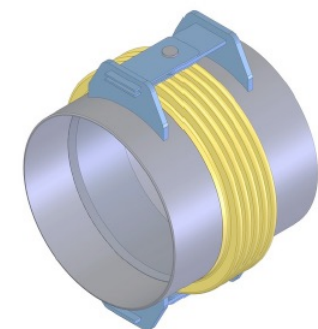
Angular expansion joints from Amnitec:

- designed to absorb angular movements in all planes
- the hinges are designed to absorb the reaction forces from the internal pressure which means that fixed points are not necessary
- are not be exposed for torsion
- are available with flanges or welding ends
- design pressure: for standard type's: PN6, PN10, PN16 and PN25

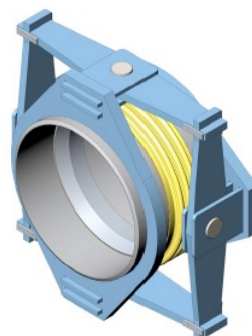
Guides:

Guides must secure that the pipeline is only moving in the predetermined direction.

All stainless steel expansion joints, type AN1S, AN2S, AN1F and AN2F, are custom made and thus all materials and/or welding ends, floating/fixed flanges, plate flanges, welding neck flanges etc. are upon request.



Type: AN 1



Type: AN 2

All information in this document is without any obligation, specifications subject to change without any notice.