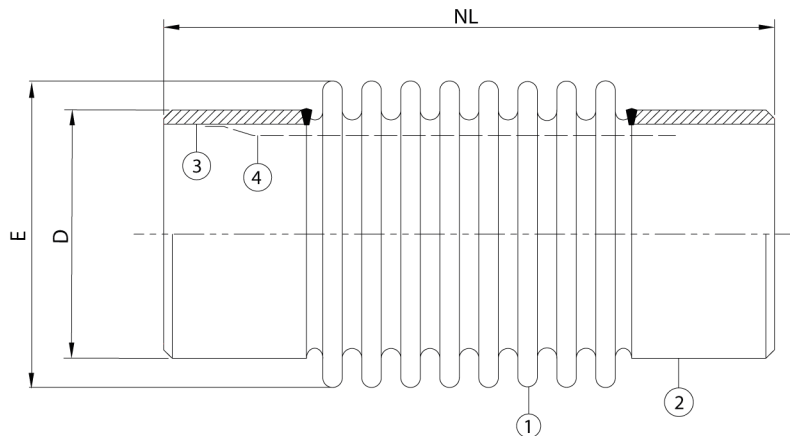


## Stainless steel expansion joint, type ANW

### Applications

An expansion joint with steel welding ends for applications in mainly heating systems, where a thermal expansion of the piping has to be absorbed. This type of expansion joint has to be welded into the piping system and it is basically meant for axial movements.



### Technical description

Bellow (1) : AISI 316Ti  
 Welding ends (2+3) : Carbon Steel  
 Inner sleeve (4 Optional) : AISI 304

Diameter	Type	NL	Axial	Axial			Max.	Max.
DN		neutral length	compression	extension	D	E	pressure	pressure
mm (in)		mm	mm	mm			@20°C/bar	@100°C/bar
15(½")	ANW 151620	148	-10	+10	21,3x2,75	27	16	10
20(¾")	ANW 201622	151	-11	+11	26,9x2,75	32	16	10
25(1")	ANW 25-16-26	152	-13	+13	33,7x3,25	39	16	10
32(1¼")	ANW 32-16-26	186	-13	+13	42,4x3,25	46	16	10
40(1½")	ANW 40-16-36	202	-18	+18	48,3x3,5	58	16	10
50(2")	ANW 50-16-46	224	-23	+23	60,3x4	69	16	10
65(2½")	ANW 65-16-48	236	-24	+24	76,1x3,6	87	16	10
80(3")	ANW 80-16-40	205	-20	+20	88,9x6,4	104	16	10
100(4")	ANW 100-16-40	205	-20	+20	114,3 x4,0	127	16	10
125(5")	ANW 125-16-50	210	-25	+25	139,7x4,0	155	16	10
150(6")	ANW 150-16-50	265	-25	+25	168,3x4,5	184	16	10
200(8")	ANW 200-16-50	276	-25	+25	219,1x6,3	235	16	10
250(10")	ANW 250-16-50	305	-25	+25	273x6,3	285	16	10
300(12")	ANW 300-16-50	335	-25	+25	323,9x8,0	337	16	10

For combined movements, consult Amnitec BV.

All information in this document is without any obligation, specifications subject to change without any notice.