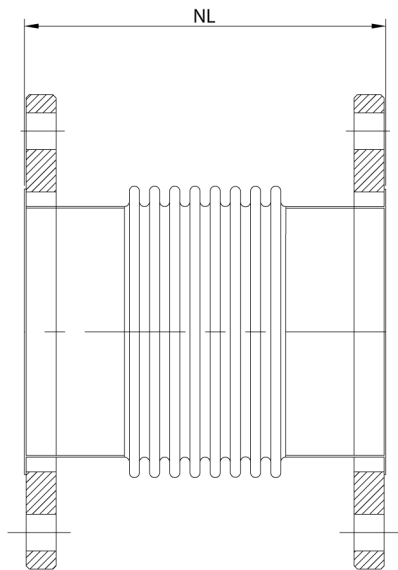
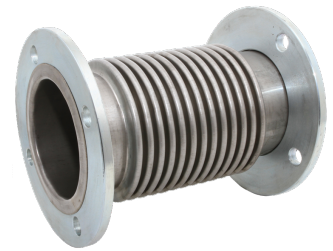


## Stainless steel expansion joint, type US1F

### Applications

US types are used in flue gas (exhaust) systems. Exhaust systems in e.g. ships are normally characterized by higher demands of temperatures, vibrations and lower pressures. Designed for general applications with low pressure and high temperatures, small vibrations and relatively large axial and lateral movements.



### Technical description

Bellow : AISI 321  
 Van Stone ends (collar) : AISI 321  
 Flanges : Carbon Steel

### Connections

Swivelling, PN6, carbon steel,  
 Other flanges (PN10/16) on request.

Diameter	Type	NL	Axial	Axial	Lateral	Max.	Max.
DN		neutral length	compression	extension	Deflection	pressure	pressure
mm (in)		mm	mm	mm	mm	@20°C/bar	@550°C/bar
80(3")	US1F80.255/F	255	-49	+49	26	2,5	0,5
100(4")	US1F100.255/F	255	-53	+53	21	2,5	0,5
125(5")	US1F125.255/F	255	-56	+56	19	2,5	0,5
150(6")	US1F150.255/F	255	-46	+46	12	2,5	0,5
200(8")	US1F200.255/I	255	-54	+54	11	2,5	0,5
250(10")	US1F250.255/I	255	-60	+60	10	2,5	0,5
300(12")	US1F300.310/I	310	-69	+69	12	2,5	0,5
350(14")	US1F350.310/I	310	-75	+75	13	2,5	0,5
400(16")	US1F400.310/I	310	-78	+78	12	2,5	0,5
450(18")	US1F450.310/I	310	-77	+77	10	2,5	0,5
200(20")	US1F500.310/I	310	-75	+75	9	2,5	0,5

For combined movements, consult Amnitec BV.

*All information in this document is without any obligation, specifications subject to change without any notice.*