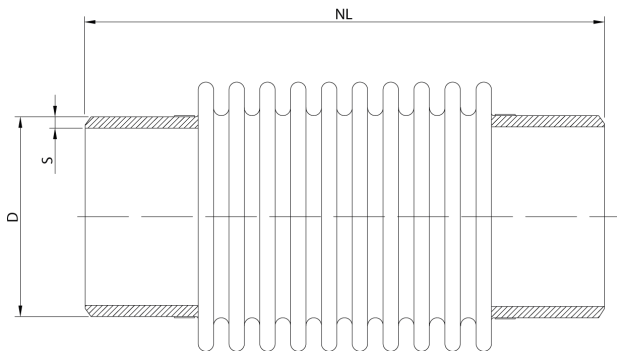


Stainless steel expansion joint, type US1S

Applications

US types are used in flue gas (exhaust) systems. Exhaust systems in e.g. ships are normally characterized by higher demands of temperatures, vibrations and lower pressures. Designed for general applications with low pressure and high temperatures, small vibrations and relatively large axial and lateral movements.



Technical description

Bellow : AISI 321
Welding ends : Carbon Steel (stainless steel on request)

Diameter	Type	NL	Axial	Axial	Lateral	D	S	Max.	Max.
DN		neutral length	compression	extension	deflection			pressure	pressure
mm (in)		mm	mm	Mm	mm	mm	mm	@20°C/bar	@550°C/bar
32(1¼")	US1S032.205/D	205	-31	+31	26	42,4	2,6	2,5	0,5
40(1½")	US1S040.205/D	205	-31	+31	26	48,3	2,9	2,5	0,5
50(2")	US1S050.245/D	245	-38	+38	38	60,3	2,9	2,5	0,5
65(2½")	US1S065.245/D	245	-45	+45	27	76,1	2,9	2,5	0,5
80(3")	US1S080.245/D	245	-49	+49	26	88,9	3,2	2,5	0,5
90(3½")	US1S090.245/D	245	-49	+49	26	101,6	3,6	2,5	0,5
100(4")	US1S100.245/D	245	-53	+53	21	114,3	3,6	2,5	0,5
125(5")	US1S125.245/D	245	-56	+56	19	139,7	3,6	2,5	0,5
150(6")	US1S150.245/D	245	-46	+46	12	168,3	4	2,5	0,5
175(7")	US1S175.245/D	245	-49	+49	11	193,7	4,5	2,5	0,5
200(8")	US1S200.245/D	245	-54	+54	11	219,1	4,5	2,5	0,5
250(10")	US1S200.245/D	245	-51	+51	8	273	5	2,5	0,5
300(12")	US1S300.295/D	295	-69	+69	12	323,9	5,6	2,5	0,5
350(14")	US1S350.295/D	295	-75	+75	13	355,6	5,6	2,5	0,5
400(16")	US1S400.295/D	295	-78	+78	12	406,4	6,3	2,5	0,5
450(18")	US1S450.295/D	295	-77	+77	10	457	6,3	2,5	0,5
500(20")	US1S500.295/D	295	-75	+75	9	508	6	2,5	0,5

For combined movements, consult Amnitec BV.

All information in this document is without any obligation, specifications subject to change without any notice.