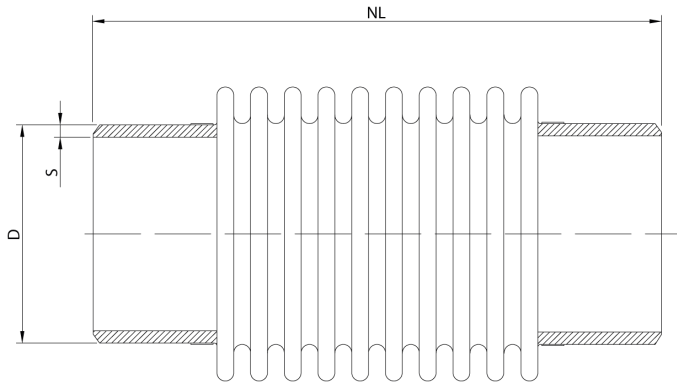


Stainless steel expansion joint, type US1S-185

Applications

US types (length 185 mm) are used in flue gas (exhaust) systems. Exhaust systems in e.g. ships are normally characterized by higher demands of temperatures, vibrations and lower pressures. Designed for general applications with low pressure and high temperatures, small vibrations and axial and lateral (small) movements.



Technical description

Bellow : AISI 321
Welding ends : Carbon Steel/ AISI 304

Diameter	Type	NL	Axial	Axial	Lateral	D	S		Max.	Max.
DN		neutral length	compression	extension	deflection			Material weld end	pressure	pressure
mm (in)		mm	mm	Mm	mm	mm	mm		@20°C/bar	@550°C/bar
300(12)	US1S300.0136	185	-30	+30	2	323,9	5,6	AISI 304	2,5	0,5
300(12)	US1S300.0160	185	-30	+30	2	323,9	5,6	Steel 37.2	2,5	0,5
350(14)	US1S350.0140	185	-30	+30	2	355,6	5,6	AISI 304	2,5	0,5
350(14)	US1S350.0138	185	-30	+30	2	355,6	5,6	Steel 37.2	2,5	0,5
400(16)	US1S400.0162	185	-30	+30	2	406,4	6,3	AISI 304	2,5	0,5
400(16)	US1S400.0177	185	-30	+30	2	406,4	6,3	Steel 37.2	2,5	0,5
450(18)	US1S450.0091	185	-30	+30	2	457,2	6,3	AISI 304	2,5	0,5
450(18)	US1S450.0090	185	-30	+30	2	457,2	6,3	Steel 37.2	2,5	0,5
500(20)	US1S500.0129	185	-30	+30	1	508	8	AISI 304	2,5	0,5
500(20)	US1S500.0128	185	-30	+30	1	508	8	Steel 37.2	2,5	0,5
600(24)	US1S600.0177	185	-30	+30	1	610	8	AISI 304	2,5	0,5
600(24)	US1S600.0156	185	-30	+30	1	610	8	Steel 37.2	2,5	0,5

For combined movements, consult Amnitec BV.

All information in this document is without any obligation, specifications subject to change without any notice.