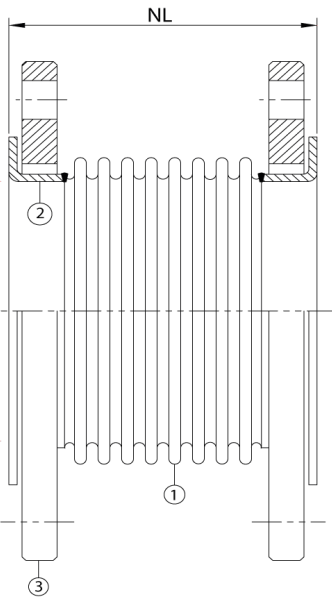
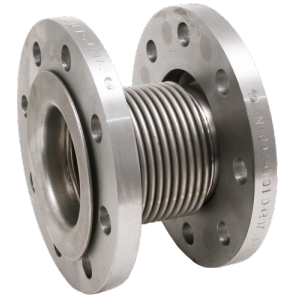


Stainless steel expansion joint with swivel flanges, type ANL

Applications

An expansion joint with stainless steel collars and steel swivel flanges according to PN10/16 (see table). For applications in heating systems, where a thermal expansion of the piping has to be absorbed. This type of expansion joint is basically meant for axial movements. And where a short overall length is required.



Technical description

Bellow (1) : AISI 316Ti
 Collars (2) : AISI 321
 Flanges (3) : Carbon Steel

Connections

Swivel flanges, PN16 (DN200 PN10), carbon steel,

Diameter	Type	NL	Axial	Axial	Max.	Max.
DN		neutral length	compression	extension	pressure	pressure
mm (in)		mm	mm	mm	@20°C/bar	@100°C/bar
15(½")	ANL 151620	130	-10	+10	16	10
20(¾")	ANL 201622	130	-11	+11	16	10
25(1")	ANL 251626	130	-15	+15	16	10
32(1¼")	ANL 321626	130	-15	+15	16	10
40(1½")	ANL 401638	130	-19	+19	16	10
50(2")	ANL 501634	130	-17	+17	16	10
65(2½")	ANL 651630	130	-15	+15	16	10
80(3")	ANL 801636	130	-18	+18	16	10
100(4")	ANL 1001636	130	-18	+18	16	10
125(5")	ANL 1251636	130	-18	+18	16	10
150(6")	ANL 1501636	130	-18	+18	16	10
200(8")	ANL 2001630	130	-15	+15	10	10

For combined movements, consult Amnitec BV.

All information in this document is without any obligation, specifications subject to change without any notice.